

For reference only. See data sheet for the detailed specifications.

Technical Specification



Frequency Range(GHz)	3.0 – 40.0
Gain(dBi)	12 Typ.
Polarization	Dual Linear
3dB Beamwidth(deg)	E Plane: 101 - 28
	H Plane: 94 - 18
Cross Pol. Isolation(dB)	30 Typ. ; 15 Min.
Port to Port Isolation(dB)	30 Typ. ; 20 Min.
VSWR	1.5:1 Typ.
	3.5:1 Max.
Connector	2.92mm-Female or 2.4mm-Female
Power Handling(W CW)	2.92mm-Female: 20 Max.
	2.4mm-Female: 10 Max.
Material	Al
Finish	Chemical Conversion Coating
Size(mm)	54.5 x 54.5 x 90
Net Weight(Kg)	0.15 Around

PATENT ID (US)

US D975690

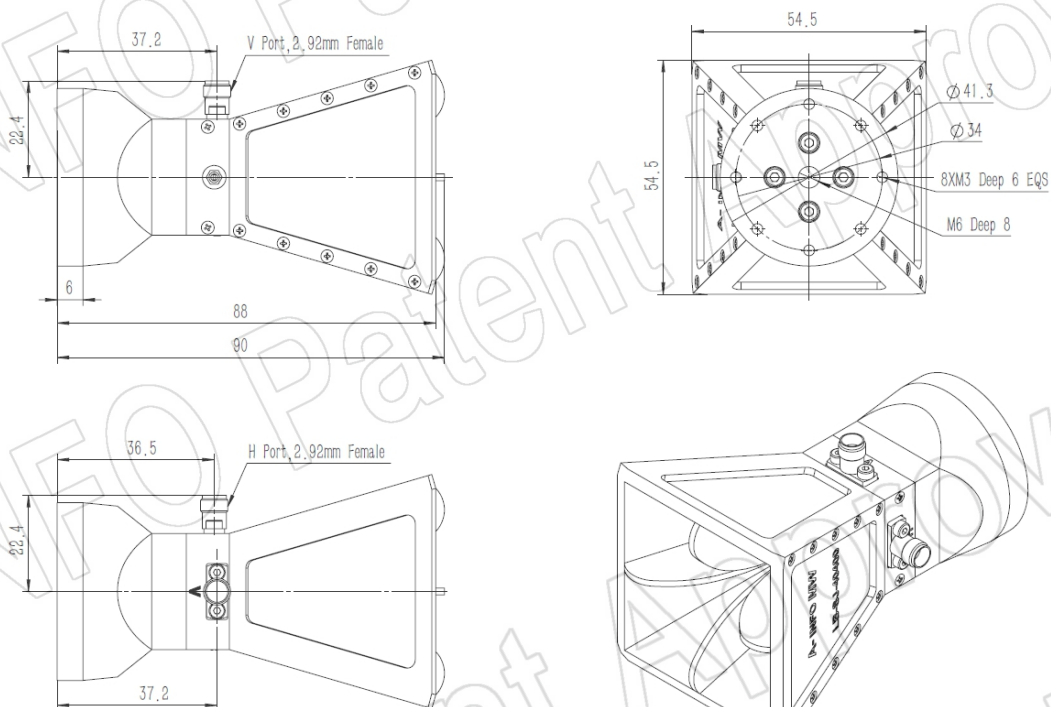
PATENT ID (China)

ZL201930459258.1

Outline Drawing (Size: mm)

2.92mm-Female Output (P/N: LB-SJ-30400-KF)

For 2.4mm-Female output outline drawing, please contact A-INFO.



AINFO Inc.

China(Beijing):
China(Chengdu):
USA :

Tel: (+86) 10-6266-7326,
Tel: (+86) 28-8519-2786,
Tel: (+1) 949-639-9688,

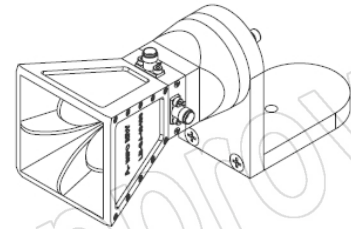
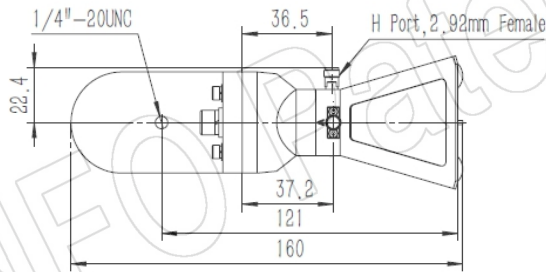
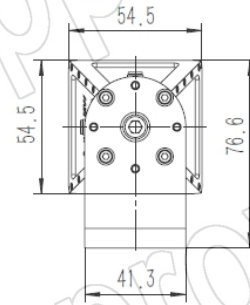
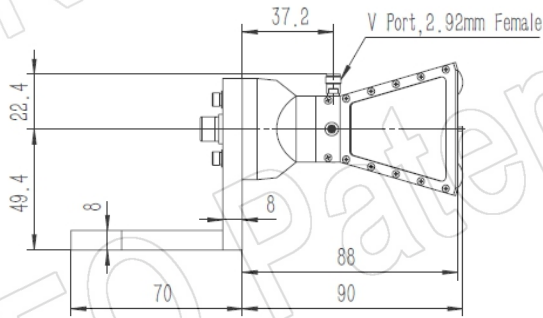
(+86) 10-6266-7327
(+86) 28-8519-3044
(+1) 949-639-9608

Fax: (+86) 10-6266-7379
Fax: (+86) 28-8519-3068
Fax: (+1) 949-639-9670

Website: www.ainfoinc.com
Email: sales@ainfoinc.com

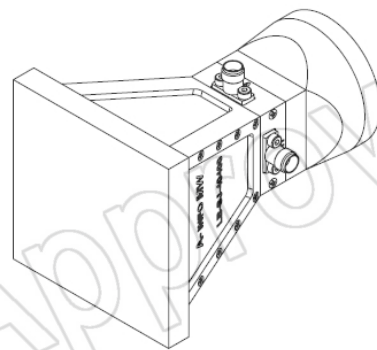
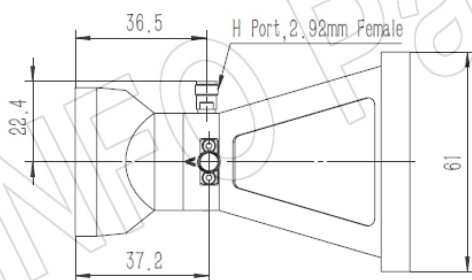
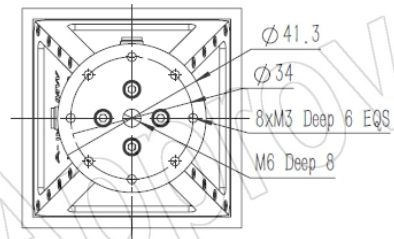
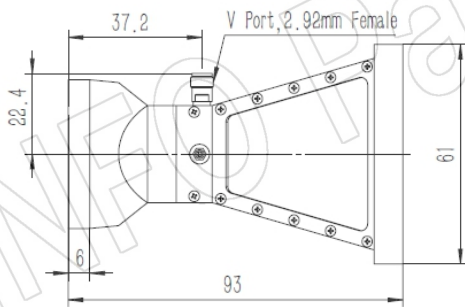
2.92mm-Female Output with L Type Mounting Bracket (Option, P/N: LB-20180-L)

For 2.4mm-Female output outline drawing, please contact A-INFO.



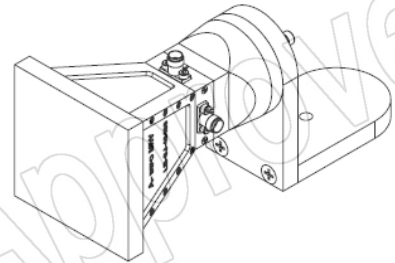
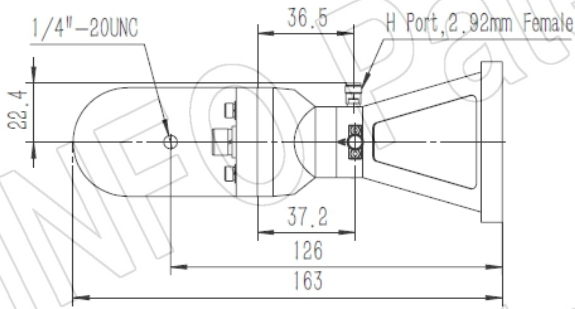
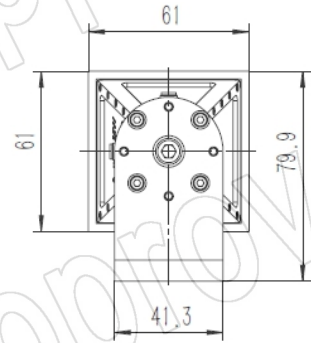
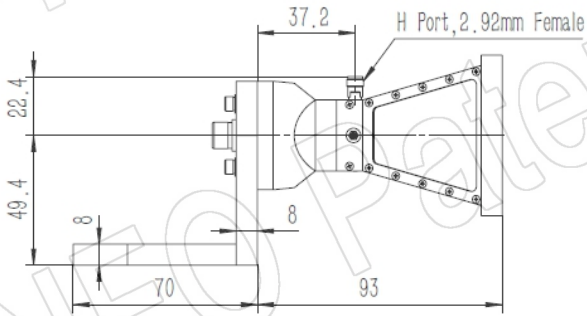
2.92mm-Female Output with Radome (Option, P/N: LB-SJ-30400-KFSPO, Outdoor Application)

For 2.4mm-Female output outline drawing, please contact A-INFO.



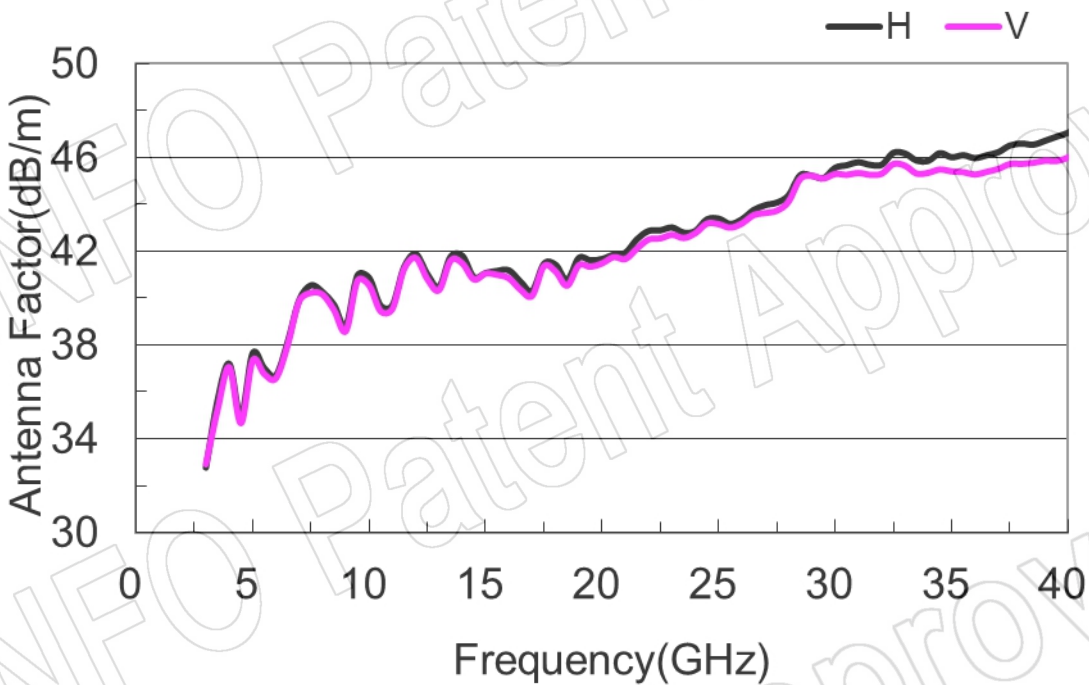
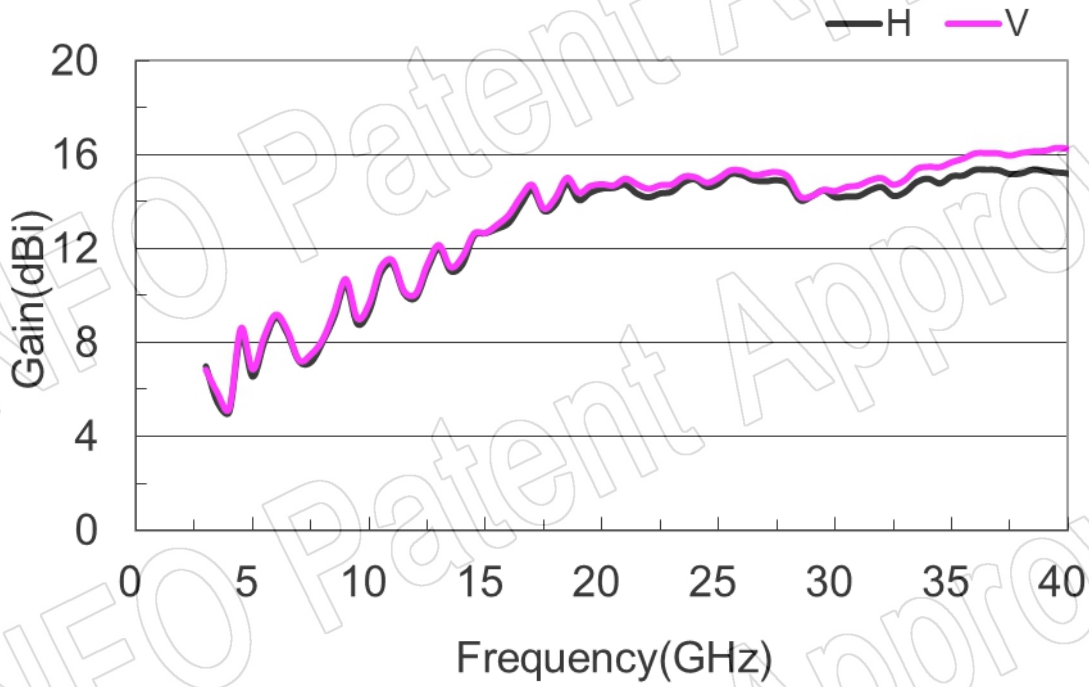
2.92mm-Female Output with L Type Mounting Bracket & Radome (Option, P/N: LB-20180-L & LB-SJ-30400-KFSPO, Outdoor Application)

For 2.4mm-Female output outline drawing, please contact A-INFO.

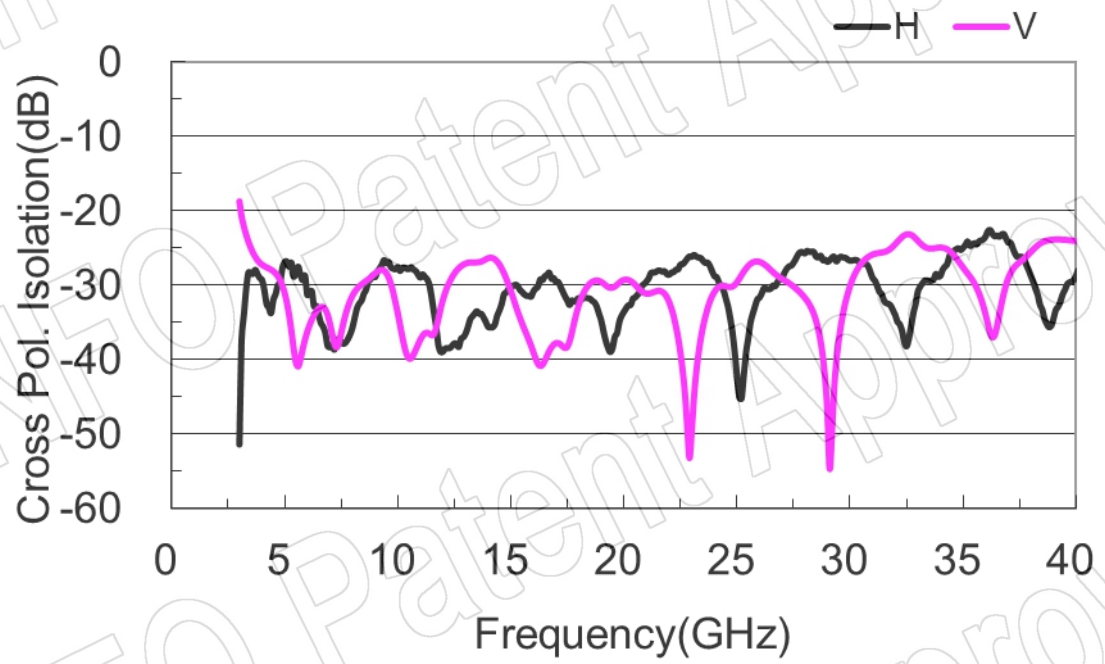


Test Results

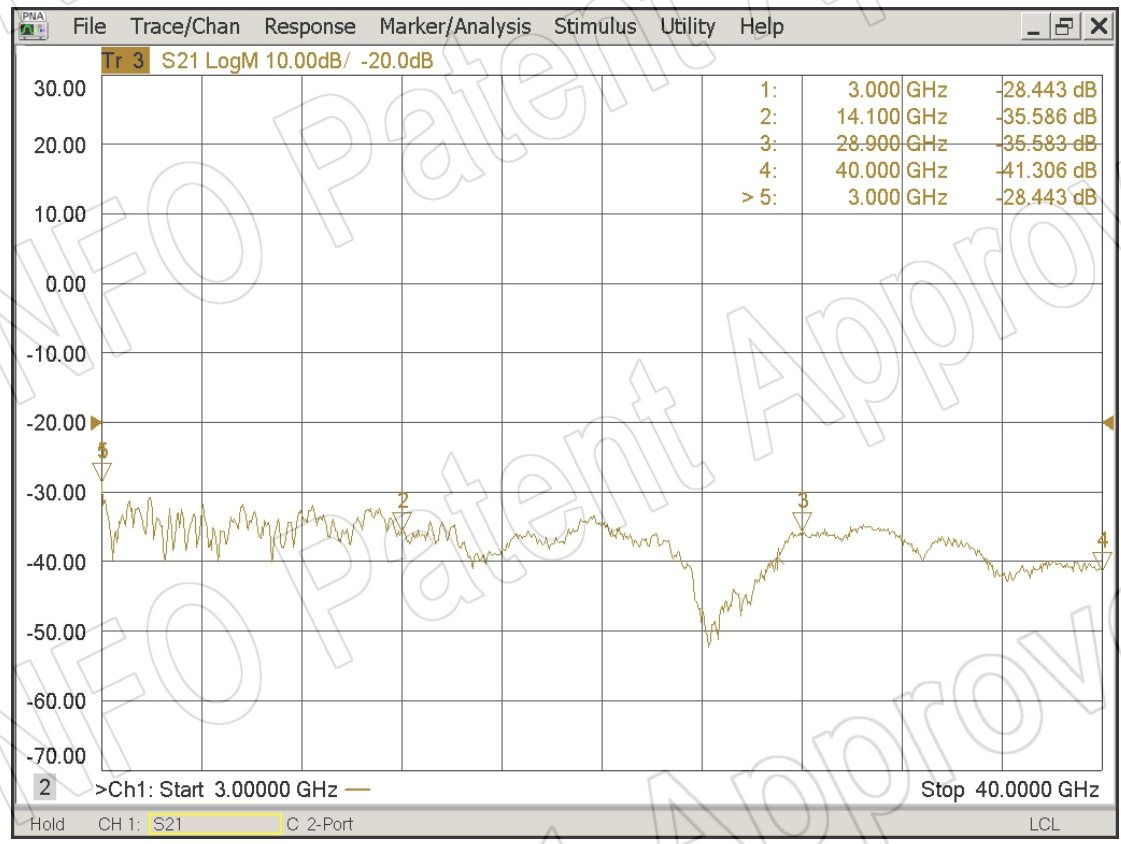
1. Gain & Antenna Factor



2. Cross Polarization Isolation

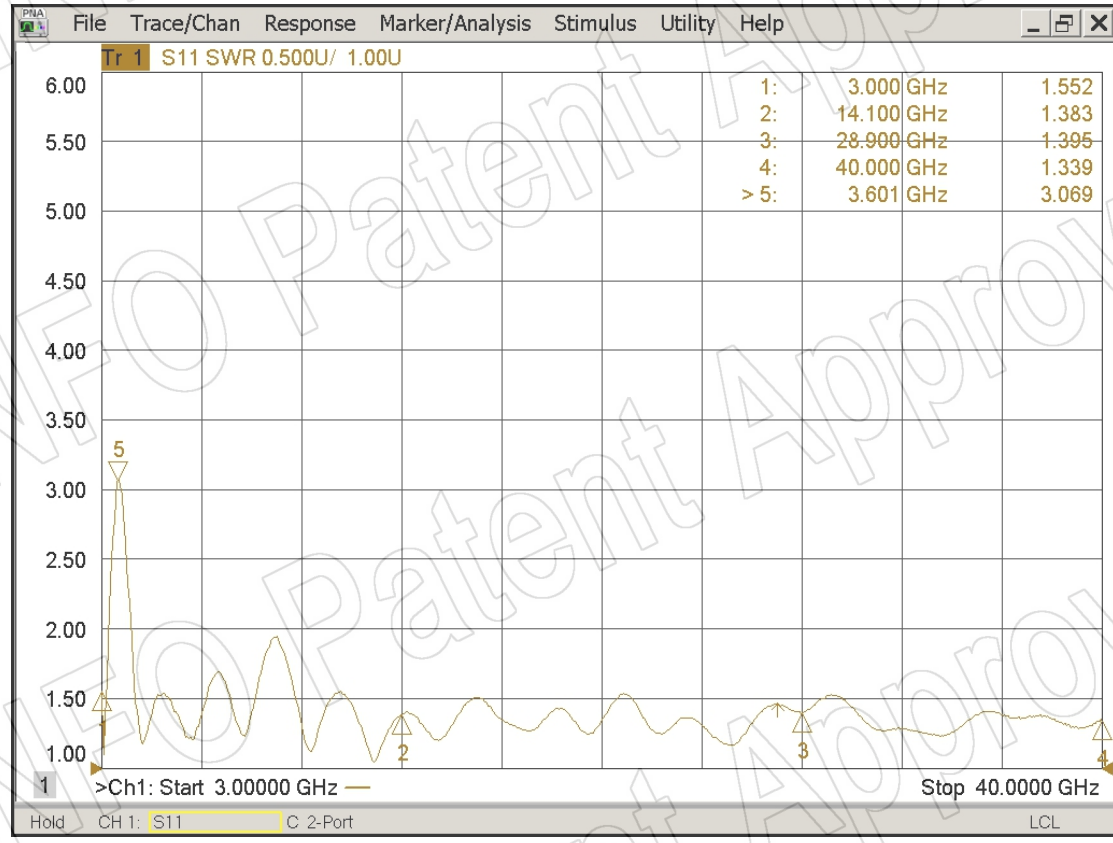


3. Port to Port Isolation



4. VSWR

Port-H



Port-V



5. Pattern

